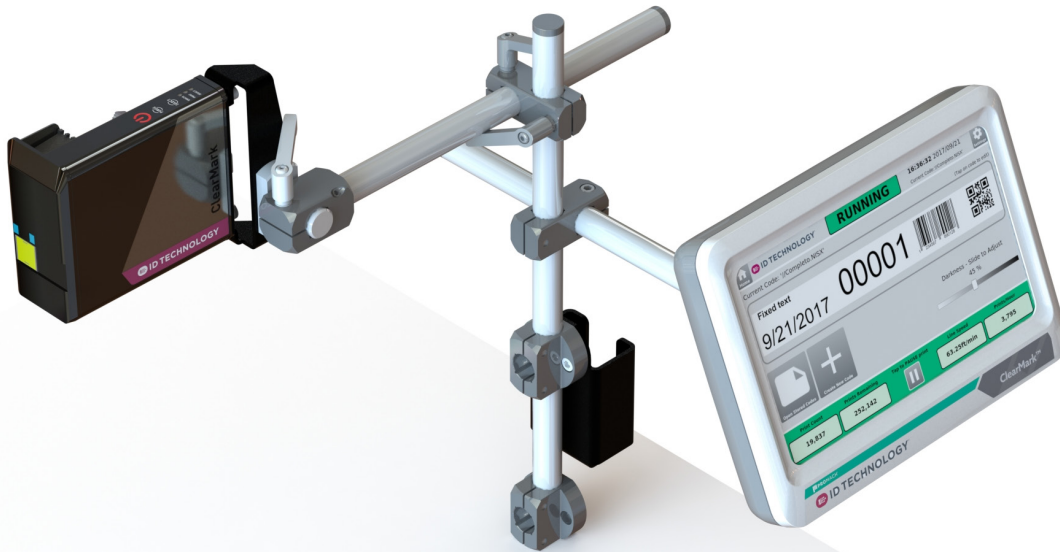


# ID TECHNOLOGY®

L&C

LABELING & CODING

## CLEARMARK™ THERMAL INKJET PRINTER



### HP based high resolution printer

ClearMark by ID Technology is the new generation of smart inkjet printer for many applications.

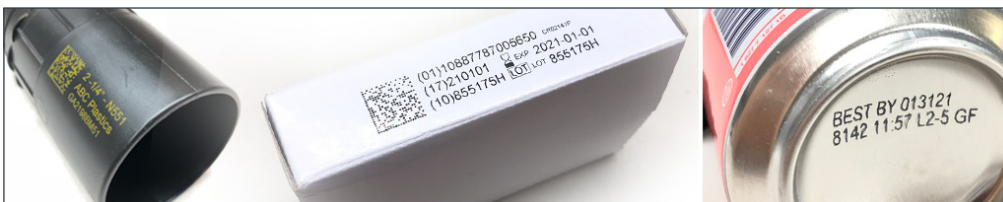
Based on HP's hugely successful Thermal Inkjet (TIJ) technology, ClearMark can print high quality text, graphics and barcodes onto just about any primary or secondary packaging material.

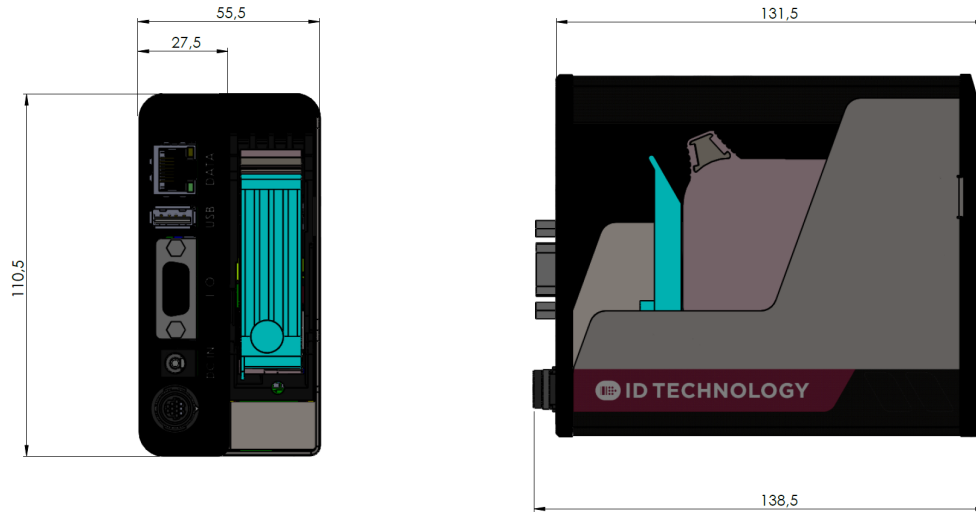
Designed to be incredibly easy to install and use, ClearMark is virtually maintenance free and produces perfect codes every time.

The ClearMark system includes the industrial grade printhead, a 10 inch color HMI for message design and control as well as mounting hardware. A wide range of inks is available for both porous and non-porous materials.

### FEATURES AND BENEFITS

- Smart Thermal Inkjet with the latest HP technology to provide consistently high-quality codes on porous and non-porous products.
- All new bright, clear and responsive 10" interface for simplified programming and status.
- More up time with a virtually maintenance free system that eliminates the mess and flushing solvents associated with traditional coding solutions.





Dimensions	2.2"(55.5mm) W x 4.4"(110.5mm) H x 5.5"(138.5mm) L
Features	<p>Compact, robust metal designed smart print head.</p> <p>Multiple user interfaces for operation:</p> <ul style="list-style-type: none"> <li>- Common function buttons directly on the smart head.</li> <li>- New easy to use 10" HMI.</li> <li>- PC software design and control.</li> </ul>
Applications	Coding and identification directly on products, packaging and cases.
Print Specifications	<p>Print height: ½ inch / 12.5mm.</p> <p>Maximum print length: unlimited.</p> <p>Nozzle distance to Surface: 0.5 - 5 mm.</p> <p>Max print speed @ 300 dpi – 200ft/min (61m/min) - other speeds and resolutions available.</p> <p>Inputs available for selecting messages from PLC.</p> <p>Internal photocells and auto speed detection – External encoder and photocell.</p> <p>Printing direction: Left -&gt; Right-Right -&gt; Left according to settings or input.</p>
Message Capabilities	<p>Message creation wizard for easy composition.</p> <p>Full WYSIWYG drag and drop touchscreen to easily manage message editing.</p> <p>Unlimited fields for Counters, Time, Date, Barcodes, Logos and Graphics.</p> <p>Live feedback for count values, prints/cartridge remaining, line speed and production.</p> <p>Storage: virtually unlimited – defined by SD storage.</p> <p>True Type fonts.</p>
Connections	<p>USB pen drive.</p> <p>Ethernet.</p> <p>External encoder/photocell input.</p> <p>I/O - 5 inputs and 1 output.</p>
Environmental Conditions	<p>Temperature: from 32 °F (0 °C) to 113 °F (45 °C).</p> <p>Relative humidity: up to 90%.</p>
Electrical Requirements	95 - 250 VAC, 50/60 Hz.
Substrates / Ink Types	<p>Wide range of inks for porous and non-porous substrates.</p> <p>Inks packaged in 42ml cartridges.</p>